



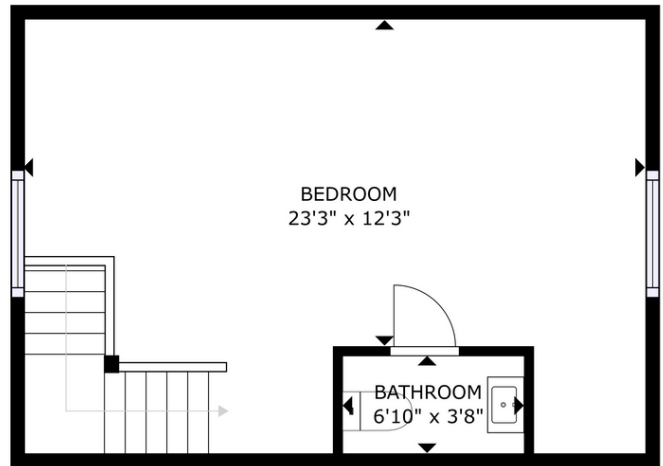
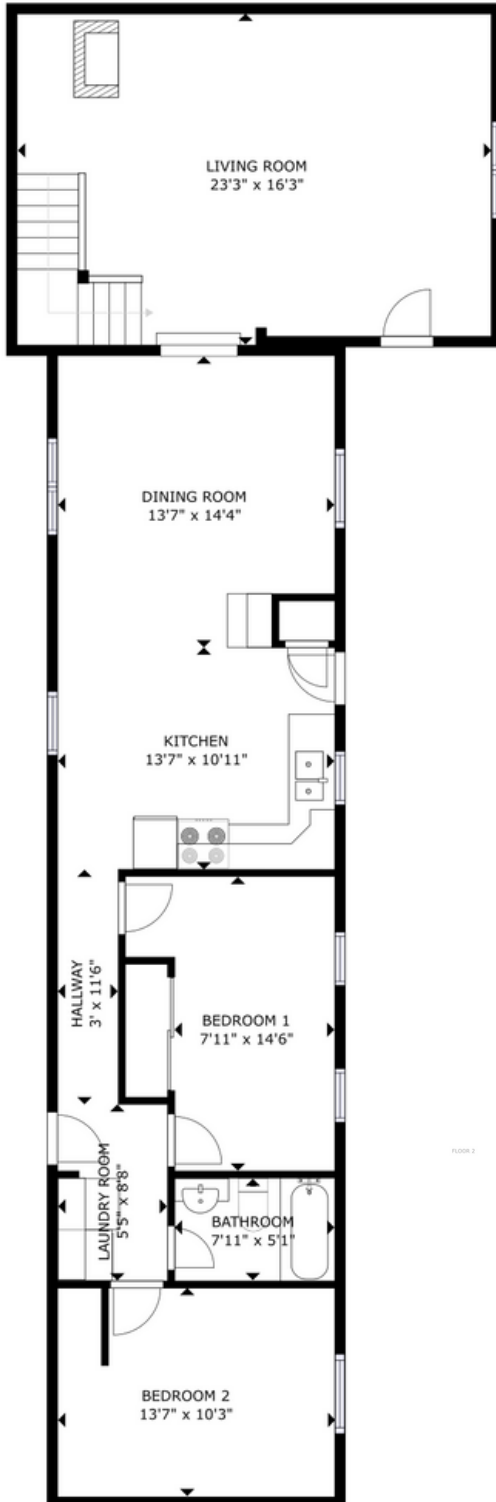
640 SCOTCH LAKE ROAD



Thanks for viewing this property! Please take a flyer with you.

PROPERTY OVERVIEW

Welcome to 640 Scotch Lake Rd. This property sits on a private acre lot and is a short distance away from Mactaquac Provincial Park. Across the street, a dirt road leads you down to Scotch Lake and a short drive around the lake will lead you to some beautiful waterfalls to explore. Inside the home, you are first welcomed by a spacious open kitchen and dining area. To the left and down the hall you will find the main bathroom, laundry area, and two bedrooms. The addition on the opposite end of the home you will find a massive rec room with exposed beams and a cozy wood fireplace. Head upstairs to your private master retreat with a convenient half-bath ensuite. The home has three separate ductless mini splits that will help keep the home warm/cool all year long. The backyard is private and big enough for the whole family to enjoy an evening on the deck or cozy up by the campfire. Being only 25-30 to Fredericton this home offers the luxury of country living with the convenience of being a short distance away to the city of Fredericton.



FLOOR 2

GROSS INTERNAL AREA:
FLOOR 1: 1143 sq ft, FLOOR 2: 378 sq ft
TOTAL: 1521 sq ft

SIZES AND DIMENSIONS ARE APPROXIMATE, ACTUAL MAY VARY.

Matterport







THE Right Choice REALTY



(506) 455-1980



info@therightchoicerealty.ca



therightchoicerealty.ca

This is not intended to solicit those who are currently working with another real estate company - we cooperate fully with other agents

MLS® #NB089824