



21 HARVEST COURT



Thanks for viewing this property! Please take a flyer with you.

PROPERTY OVERVIEW

Located at the end of a quiet court this split-entry home offers the perfect combination of comfortable living and potential rental income. As you step inside, you are greeted by an inviting foyer that leads to a bright and open living room, filled with natural light from large windows. The adjoining dining area is perfect for family dinners or entertaining guests, with easy access to the deck for seamless indoor-outdoor living. The well-appointed kitchen offers modern stainless-steel appliances, ample counter space, a large center island, and a functional layout for cooking enthusiasts. Three spacious bedrooms on this level provide comfortable accommodations for the whole family. The primary bedroom offers a walk-in closet, full ensuite with a large vanity, standup shower, and corner jacuzzi tub. A convenient 2nd full bathroom completes this floor. Heading down a level you will find a tucked-away laundry area and access to the two-car attached garage that provides ample parking and storage space, making daily life convenient and hassle-free.

The rental unit includes a cozy living area, a well-equipped kitchen, a bedroom, and a full bathroom with laundry. It's a turnkey opportunity for potential tenants. Completing this package is an energy-efficient heating and cooling system that keeps utility costs in check year-round. The location is a real highlight, with easy access to schools, parks, shopping, and commuter routes, making daily life convenient and enjoyable.

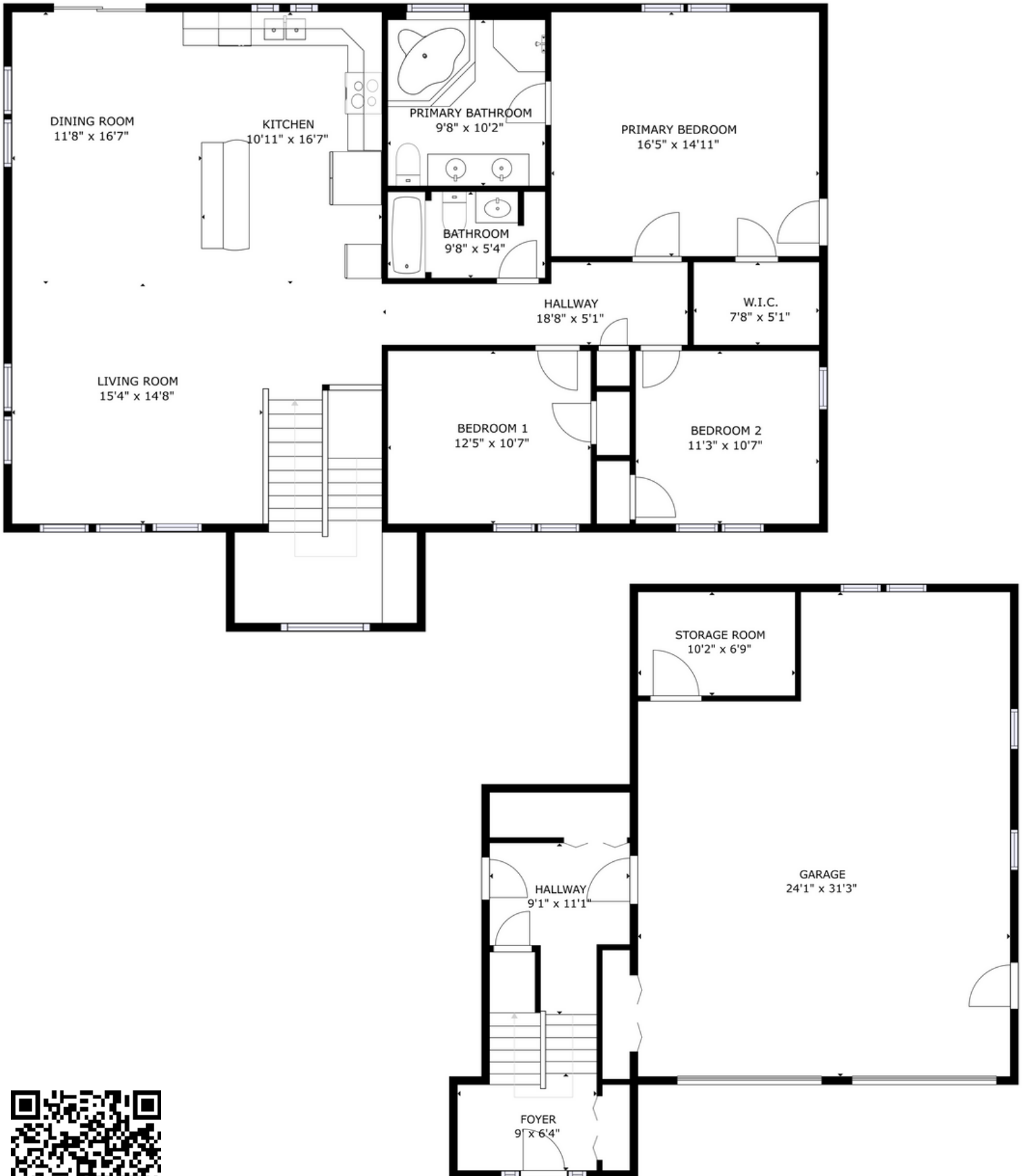


UPDATES & FEATURES

- ✓ Oversized Split-Entry Home
- ✓ Open Concept Main Living Area
- ✓ Hardwood Flooring
- ✓ Ducted Heat Pump System
- ✓ Primary Suite with 4PC Ensuite
- ✓ Ground-Level One Bedroom Apartment
- ✓ Stylish Kitchen with Two-Level Island
- ✓ XL Entryway with Space for a Family
- ✓ Walking Distance to Northside Schools
- ✓ Family-Friendly Neighbourhood



Main Home

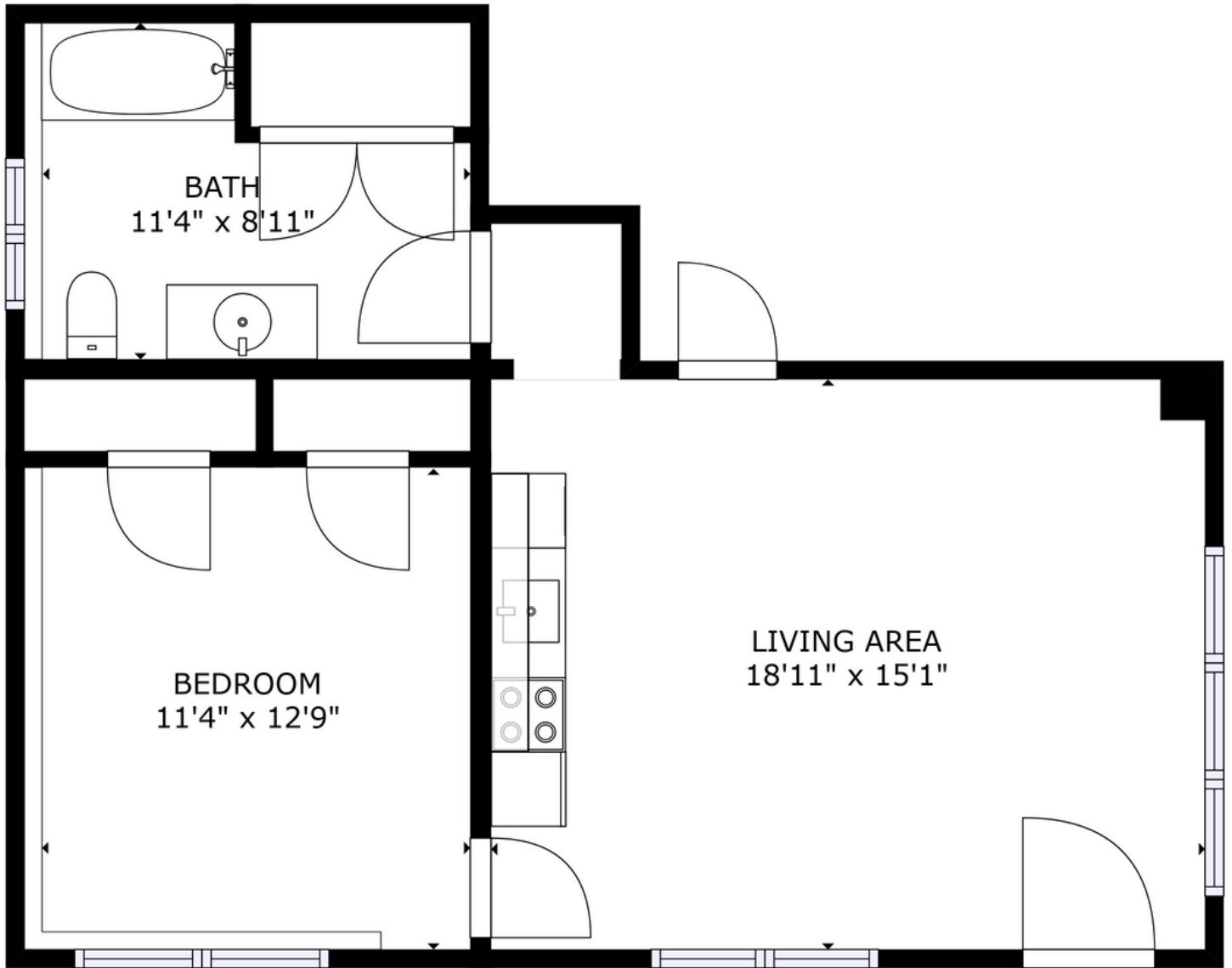


rightchoice.link/21harvestmainMP

GROSS INTERNAL AREA
FLOOR 1: 301 sq ft, FLOOR 2: 1608 sq ft
EXCLUDED AREAS; GARAGE: 678 sq ft
TOTAL: 1909 sq ft
SIZES AND DIMENSIONS ARE APPROXIMATE, ACTUAL MAY VARY.



Apartment



rightchoice.link/21harvestaptMP

Property Taxes for 2023: \$5069.41



THE
Right Choice
REALTY



(506) 455-1980



info@therightchoicerealty.ca



therightchoicerealty.ca

This is not intended to solicit those who are currently working with another real estate company - we cooperate fully with other agents