



36 SANDCASTLE LANE

MLS® #: NB096918

WELCOME

T O Y O U R N E W H O M E

Welcome to your dream waterfront property located at 36 Sandcastle Lane in the Pebble Beach community overlooking the St. John River on the Mactaquac Head Pond.

This home comes with two separate living spaces, each with its own entrance and attached garage, the perfect setup for an extended family, rental, or just extra living space for your own family.

The upper level of this bungalow offers two bedrooms and 1.5 bathrooms while featuring expansive windows that flood the living spaces with natural light, highlighting the stunning water views from every angle. The well-appointed kitchen is complete with stainless steel appliances, sleek countertops, and ample storage, making it a chef's delight. The adjoining dining area and living room provide the perfect setting for intimate gatherings or lavish dinner parties with friends and family. A formal dining room and expansive rec room with a propane fireplace complete this floor.

Descend to the lower level, where you'll find a self-contained unit offering additional living space, perfect for guests or as a rental opportunity. With its own entrance, kitchen, living room, three bedrooms, and two bathrooms, this versatile space provides endless possibilities. Outside, the expansive yard slopes gently down to the water's edge, offering a resort-like retreat for relaxation and recreation. This exquisite property boasts a prime location along the water's edge, offering breathtaking views and endless opportunities for outdoor enjoyment.





WATERFRONT

Unbelievable waterfront lot gives nearly panoramic views of the Saint John River with a sloped backyard right down to the water's edge. It's a sight to behold!



PERFECT LAYOUT

The perfect combination of open concept meets traditional: the kitchen provides a view of one living room with a separate dining room and formal living room around the corner - all with jaw-dropping views of the water!

HIGH-END FEATURES

Gleaming hardwood floors, vaulted ceilings, and stainless steel appliances help this home stand out from the rest. Simply move in and enjoy from the very first day.

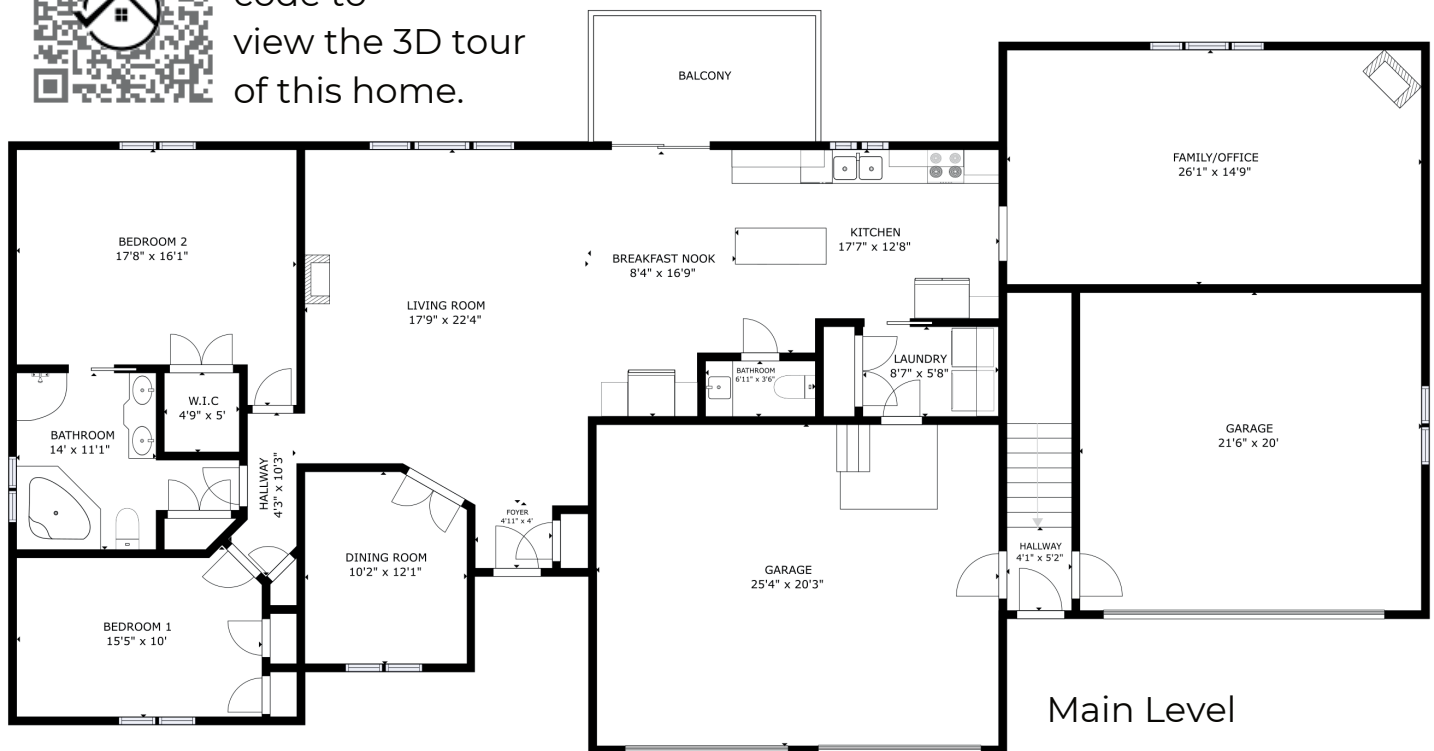


TWO-IN-ONE

Uniquely designed; this home is split into two 1900 square foot units each with their own double-car garage and private exterior space. A flexible layout that works for everyone!

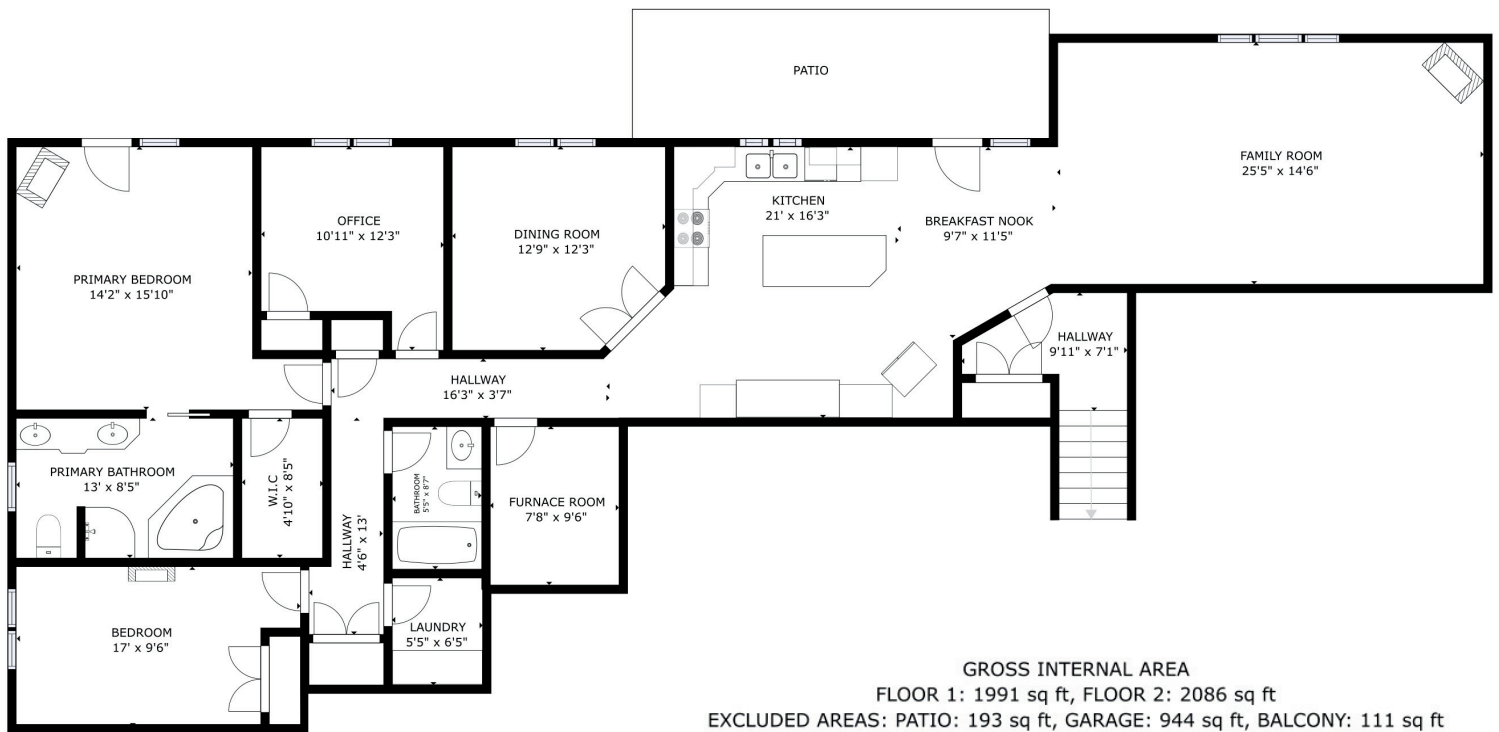


Scan the QR code to view the 3D tour of this home.





Lower Level



GROSS INTERNAL AREA
 FLOOR 1: 1991 sq ft, FLOOR 2: 2086 sq ft
 EXCLUDED AREAS: PATIO: 193 sq ft, GARAGE: 944 sq ft, BALCONY: 111 sq ft
 TOTAL: 4077 sq ft
 SIZES AND DIMENSIONS ARE APPROXIMATE, ACTUAL MAY VARY.





www.therightchoicerealty.ca

This is not intended to solicit those who are currently working with another real estate company - we cooperate fully with other agents