



700 CLIFFE STREET #308

MLS® #: NB099145

WELCOME

T O Y O U R N E W H O M E

Top floor condo unit with 3 bedrooms, 2 bathrooms and approx 1600 SQ/FT of living space. The main living area is a spacious open-concept layout that seamlessly blends the living, dining, and kitchen areas, creating an ideal space for relaxation and entertaining.

The chef-inspired kitchen is a culinary masterpiece, featuring high-end stainless steel appliances, a peninsula island, and custom cabinetry. Whether preparing a gourmet meal or enjoying a casual breakfast at the breakfast bar, every culinary experience is elevated in this exquisite space. Step outside onto the private balcony, where you can savour your morning coffee or evening cocktail while soaking in the sights and sounds of the city below.

The primary bedroom is the perfect retreat and is highlighted by a walk-in closet, and full ensuite with double vanity, standup shower, and corner jacuzzi tub. At the opposite end of the unit, you will find two more bedrooms, the main bathroom, and the laundry room finishing off this unit. Additional highlights of this remarkable residence include hardwood and ceramic floors throughout, a ductless split heat pump, and ample storage space.

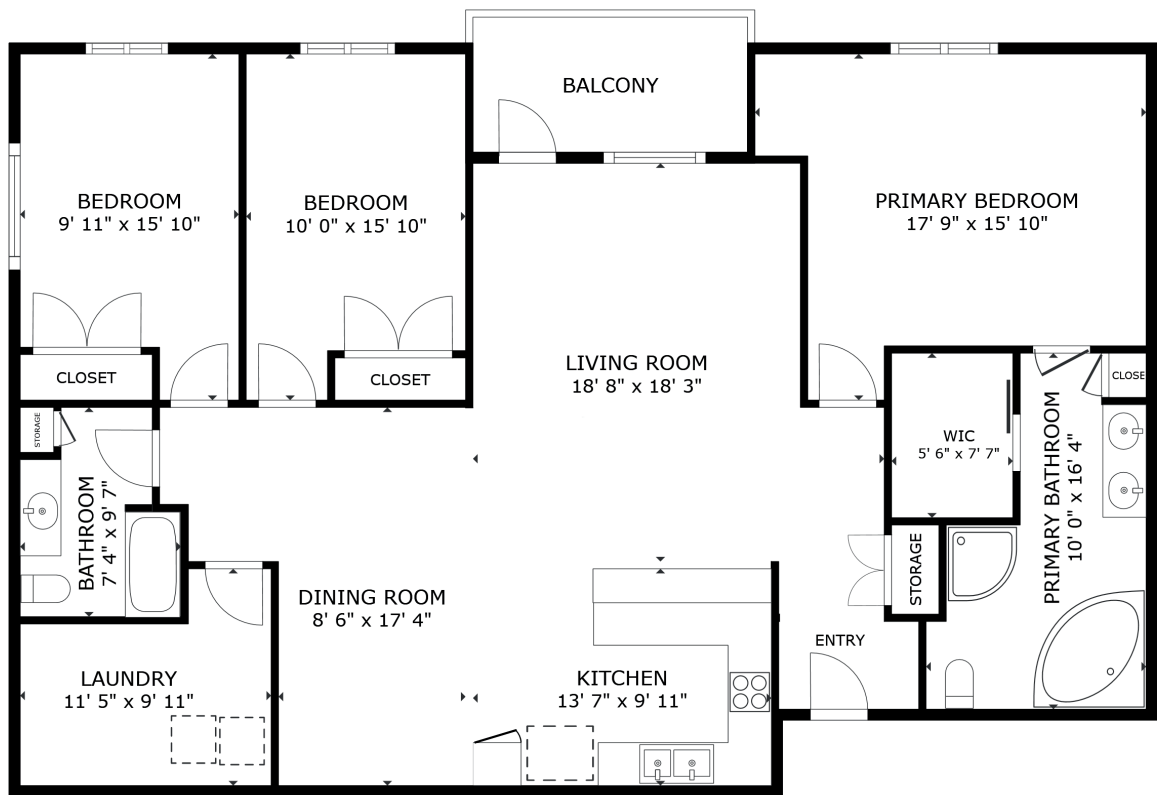
The condo building has a Community Garden, Gazebo, Parking, RV Parking, On-Site Storage Units, an Elevator, a fully equipped Exercise room, and a Social Room with a kitchen. Condo fees are \$290/month and include your city water bill. A one-time \$500 contingency fee is payable on closing by the purchaser.







GROSS INTERNAL AREA
 FLOOR PLAN 1,592 sq.ft.
 EXCLUDED AREAS : BALCONY 77 sq.ft.
 TOTAL : 1,592 sq.ft.
 SIZES AND DIMENSIONS ARE APPROXIMATE, ACTUAL MAY VARY.



FLOOR PLAN

