



125 MILLRIDGE LANE

MLS® #: NB101758

WELCOME

T O Y O U R N E W H O M E

Well-cared for garden home located in Marysville situated in a quiet, residential neighborhood offering a sense of community while maintaining privacy. The exterior features a welcoming façade with a blend of brick and vinyl siding, complemented by various flowering plants, shrubs, and a lush lawn.

Inside, the open-concept main living area creates a spacious and airy feeling. Here you will find the kitchen, equipped with modern appliances, white cabinetry, and a peninsula with raised bar seating. Next, the dining area and living room flow seamlessly together and leads to the entrance to the deck which backs onto a wooded area that creates extra privacy.

The primary bedroom is spacious, offers double closet space, and has cheater door access to the main bathroom. A 2nd bedroom and tucked-away laundry complete this floor.

The finished basement provides a 3rd bedroom, 2nd bathroom, large rec with natural gas fireplace, storage area, and a walk-out to the fenced-in backyard. The home is kept at a comfortable temperature all year with the ducted natural gas furnace.

Completing this home is an attached garage. This garden home truly offers a perfect blend of indoor comfort and outdoor beauty, providing an exceptional lifestyle for its new owner.



STYLISH LAYOUT

The main level area is spacious with the kitchen opening up to the living/dining room space; perfect for connecting with friends and family. A front office/bedroom on the main level is a nice bonus!



PRIMARY SUITE

The primary bedroom overlooks the backyard with bright hardwood flooring, double closets, and is connected to the main three-piece bathroom with tub/shower surround.

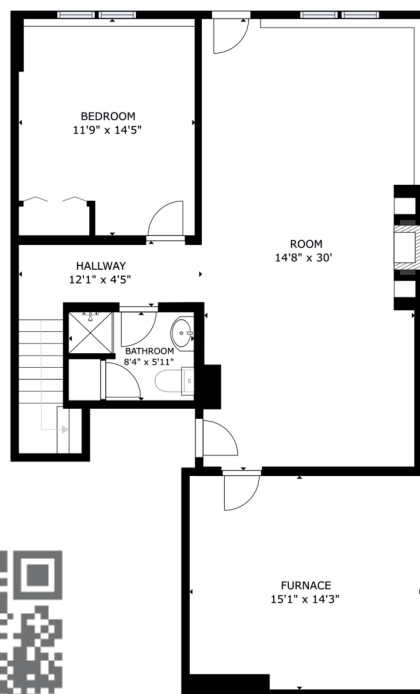
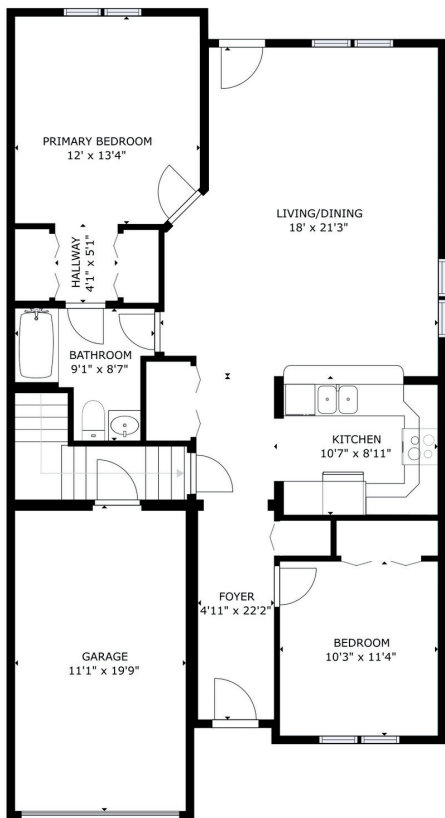
FINISHED BASEMENT

The walkout level basement provides lots of storage, a spacious living room area with access to a backyard patio, a third bedroom, and a second full bathroom - perfect for guests!



PERFECT LOCATION

Located on a street in the sought-after neighbourhood of Marysville, this home backs onto a wooded area and is just a short drive to major amenities including Walmart and Canadian Tire.



GROSS INTERNAL AREA
 FLOOR 1: 984 sq ft, FLOOR 2: 1052 sq ft
 EXCLUDED AREAS; GARAGE: 218 sq ft
 TOTAL: 2036 sq ft

SIZES AND DIMENSIONS ARE APPROXIMATE, ACTUAL MAY VARY.

