



892 PLEASANT DRIVE

MLS® #: NB102414

WELCOME

T O Y O U R N E W H O M E

This beautifully maintained 1.5-storey residence at 892 Pleasant Drive offers a perfect blend of rustic charm and modern style. Located in Minto on a well-manicured 1/3 acre lot, this home is close to local amenities and approx—40 min to Fredericton.

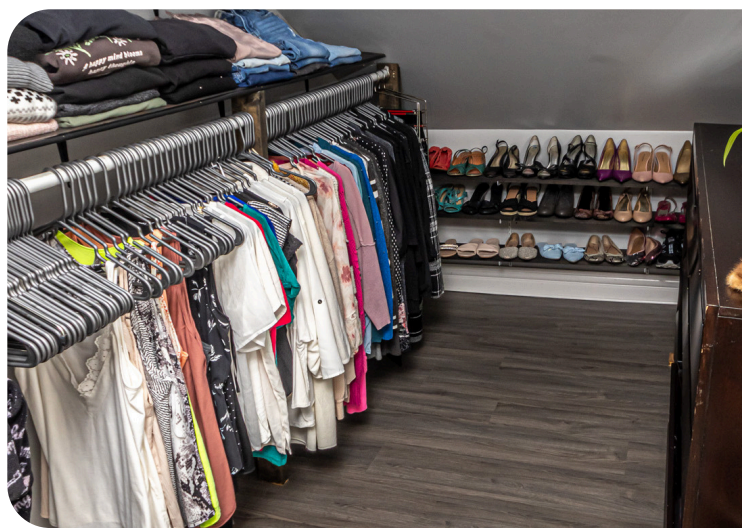
Inside the home, you are welcomed by an inviting living room highlighted by an exposed wood beam and cozy wood stove that will keep you warm in the colder months. This space leads into the kitchen where the rustic detail continues with an upgraded pine ceiling that creates a warm atmosphere.

The kitchen offers stainless steel appliances, white cabinetry with glass doors, and a spacious eat-in dining area. Off the kitchen is a convenient half bath and access to the mudroom and back patio area. Complete the main level is a laundry/storage room.

Upstairs you will find the main bathroom and two bedrooms with the primary having a large walk-in closet.

Outside of the home, it has also been very well maintained and boasts an extra wide gravel driveway, French drain, sea can storage container, covered veranda, and an additional storage shed with a fireplace.





GREAT LAYOUT

A charming front porch leads into the open living room with a stylish staircase, a wood stove, and large front window. The connected laundry room could easily be reverted to a third bedrooms.



UPDATED KITCHEN

The kitchen and dining area has been refreshed to enhance the layout. Lots of cabinetry for storage, stainless steel appliances, a backsplash, and a built-in table complete the space.

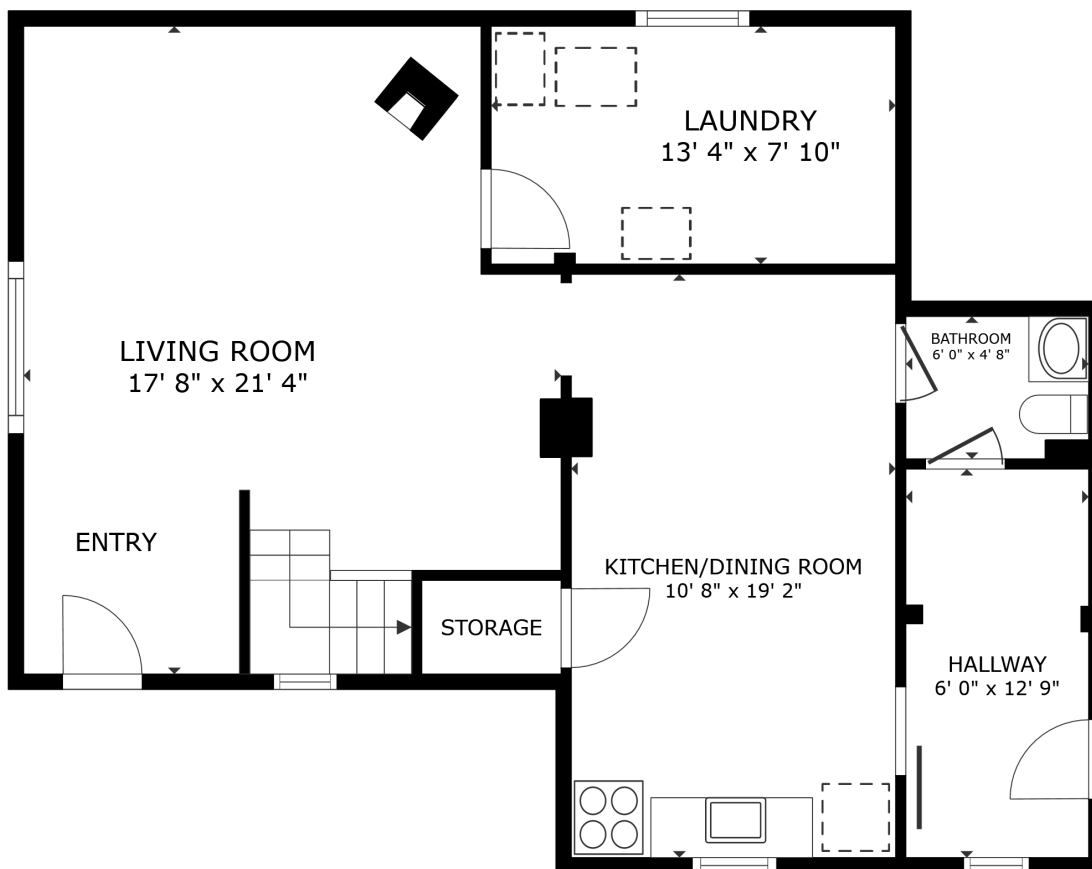
FUNCTIONAL YARD

The backyard is special with a spacious platform deck, extra storage, and a large treed lawn space for activities. The extended shed is perfect for a work shop or bonus hang out with a wood stove for the cold months.



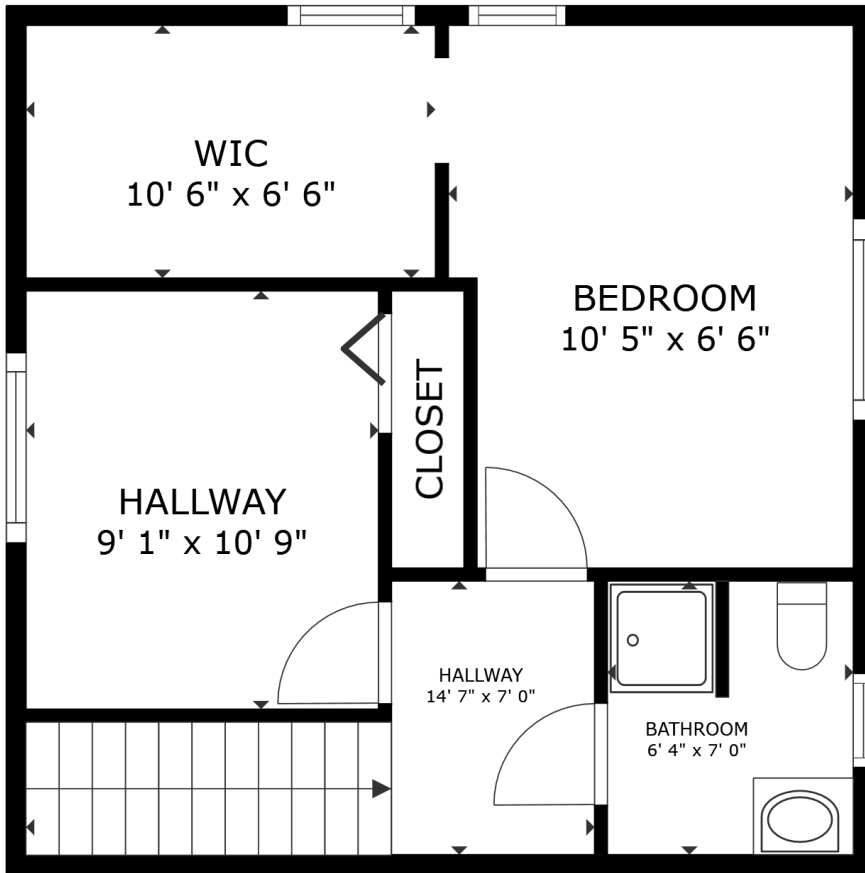
PERFECT LOCATION

Located just outside the main street of Minto, this home is just steps from the local school and a short bike ride or drive to the major amenities of the area.



Main Level





Lower Level



GROSS INTERNAL AREA
FLOOR 1 788 sq.ft. FLOOR 2 452 sq.ft.
TOTAL : 1,241 sq.ft.
SIZES AND DIMENSIONS ARE APPROXIMATE, ACTUAL MAY VARY.





www.therightchoicerealty.ca

This is not intended to solicit those who are currently working with another real estate company - we cooperate fully with other agents