



80 CHATEAU DRIVE

MLS® #: NB105718

WELCOME

T O Y O U R N E W H O M E

Welcome to this delightful 4-bedroom, 2-bathroom bungalow on a private area lot. Nestled in a quiet, tree-lined neighbourhood, this home boasts a welcoming front porch perfect for enjoying your morning coffee.

Inside, you'll find an open-concept living area with abundant natural light, original hardwood floors, and a colour palette that invites a warm, inviting atmosphere. The spacious kitchen has ample cabinet space and a peninsula that adds style and practicality. The sleek, extended countertop provides ample space for meal prep, casual dining, or socializing, while also serving as a natural divider between the kitchen and the adjacent living or dining area. This space is also accompanied by a ductless split heat pump.

Each of the bedrooms is generously sized, with large windows and plenty of closet space, making it ideal for family living or accommodating guests. A full bathroom completes this floor.

The basement is finished with even more living space. Here you will find a spacious rec room with a ductless split heat pump, 2nd bathroom, 4th bedroom, laundry room, and lots of extra storage.

Outside, the detached garage offers not only parking but additional storage space or a potential workshop. The spacious backyard is a hidden gem, with lush landscaping, mature trees, and a patio area perfect for outdoor entertaining. Major upgrades over the past few years include a metal roof (2021) on the house and garage, triple pane windows (2023), increased attic insulation (2023).





OPEN LAYOUT

The kitchen is open to the rest of the main living space. A kitchen peninsula with bar seating makes this the perfect space for families to gather or to entertain guests. There's even direct access to the large back deck.



FINISHED BASEMENT

Additional living space on the lower level is perfect for a large family with lots of storage and a selection of finished rooms to meet your specific needs; including a second full bathroom and a laundry/storage room

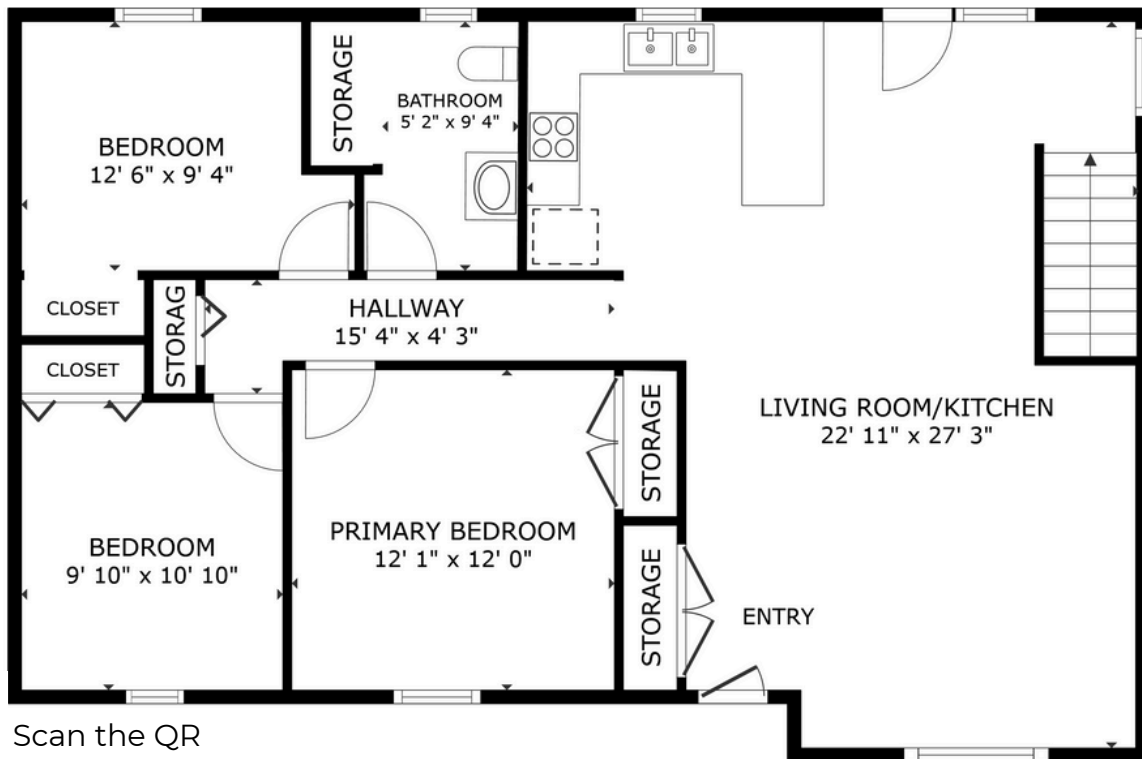
LARGE GARAGE

The private yard is surrounded by mature trees. An oversized detached double garage is the ultimate blank slate: create a full-sized workshop, park your vehicles, or turn it into a bonus living space!



PERFECT LOCATION

People say hi and wave. It's a great place to raise a family with lots of young kids around to play. If you're a pet parent there are lots of dog walkers in the neighborhood and traffic is slow.



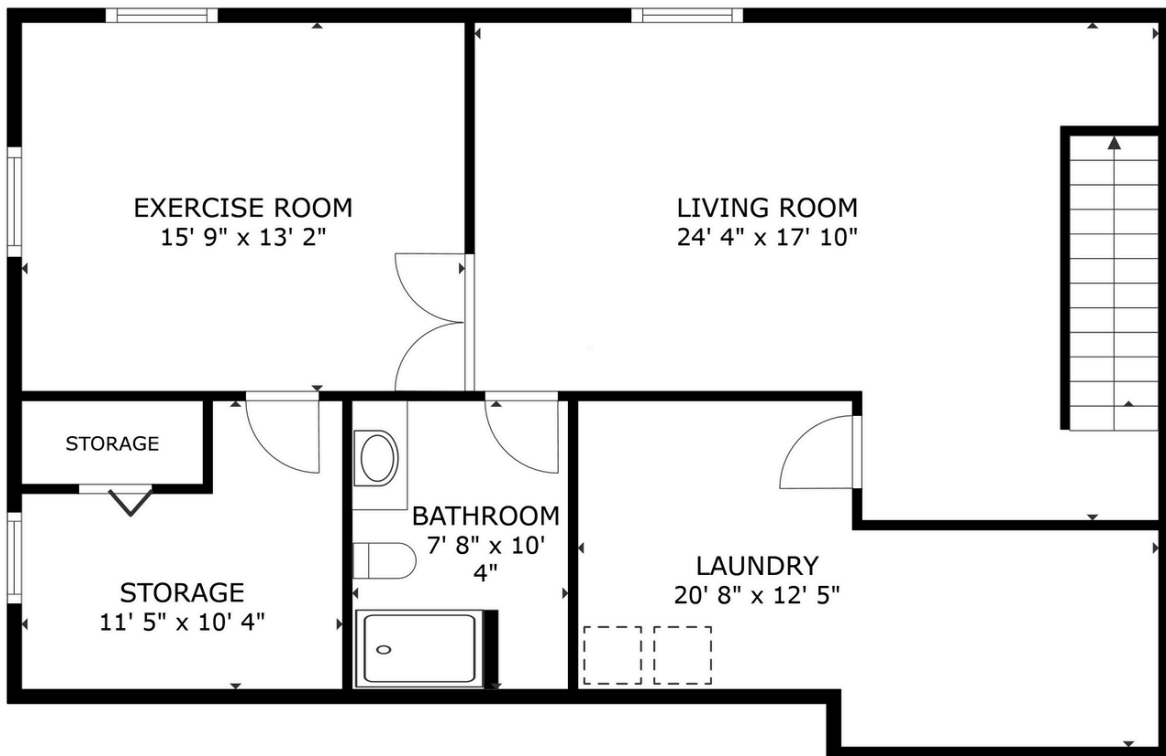
Scan the QR code to view the 3D tour of this home.

Main Level





Lower Level





www.therightchoicerealty.ca

This is not intended to solicit those who are currently working with another real estate company - we cooperate fully with other agents